

abbotFox



Great Ellingham, NR17
Guide Price £300,000

“

We are a team of genuine individuals who hold a deep passion for both property and marketing. Collectively, we bring over 70 years of experience in the property market of Norfolk and Suffolk. Our affection for both counties runs deep, and we are enthusiastic about sharing our passion with you.

Colin McKenzie | **Branch Partner**







THE DETAIL _____

abbotFox presents this generously proportioned, three bedroom, semi-detached house. Occupying a generous plot, which affords a high degree of privacy, this home offers an abundance of potential. Internally, the accommodation is neatly arranged and comprises; entrance hall, lounge, dining room, study, rear lobby, cloakroom and kitchen to the ground floor, with three comfortable bedrooms and a family bathroom off landing to the first floor. Externally, the property offers a generous driveway, and a spacious, lawned garden. An internal viewing comes highly recommended.

Guide price £300,000 - £315,000

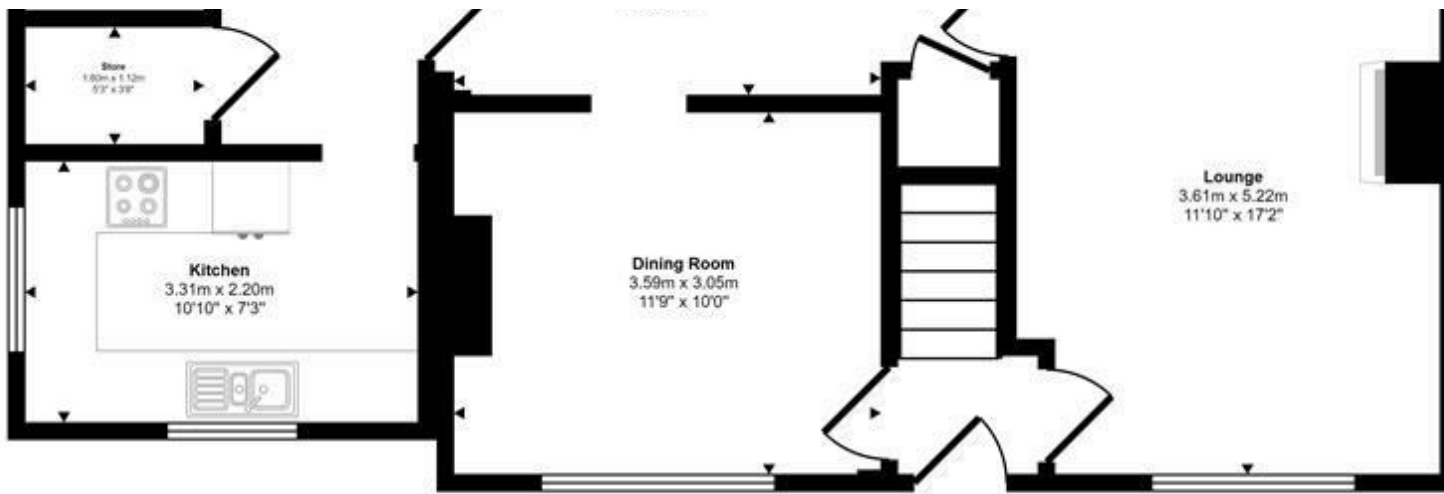






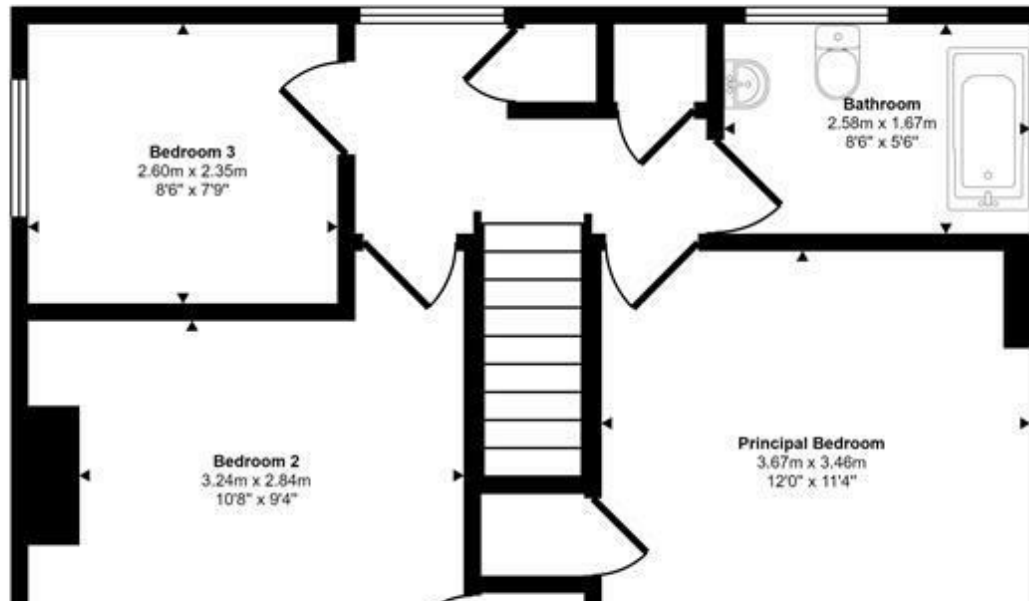
THE HIGHLIGHTS _____

- Guide price £300,000 - £315,000
- Spacious semi-detached house
- Large plot
- Potential to extend (STPP)
- Popular village location
- Chain free sale



Ground Floor

Approx 60 sq m / 650 sq ft



EPC RATING - E

Let's talk

01603 660000

sales@abbotfox.co.uk

@abbotfox

Disclaimer – In accordance with the Property Misdescriptions Act, the company abbotFox gives notice that all descriptions, references to condition, necessary permissions for use and other details are given in good faith and believed to be correct, but any purchaser should not rely on them as statements of fact, and must satisfy themselves by inspection or other means, as to their accuracy.